



Legends

Cary Towne

Discover Legends Cary Towne, the perfect combination of outstanding amenities, comfort and convenience. Exceptional apartment homes provide boundless features to create the perfect home in a picturesque Raleigh location. Enjoy a unique lifestyle in a stunning setting...Legends Cary Towne.

Amenities

- Full-size washers and dryers
- Private garages available
- Controlled access entry
- Resort-style pool and spa with sundeck
- Individual balconies or patios
- Loft 9' ceilings
- Large garden tubs in baths
- Walk-in closets and pantry
- Electric fireplaces available
- Elegant clubhouse with free wireless Internet café
- Executive business center with presentation room
- 24-hour fitness center with circuit weight training
- Lighted tennis and multi-purpose basketball courts
- Gas grill and poolside picnic cabana
- Minutes to Raleigh's business and entertainment venue
- Fully furnished corporate apartment homes available



From I-40 E, take the Cary Towne Boulevard Exit 291. Proceed left at the top of the exit ramp and cross over Farm Gate Road. Legends Cary Towne is located immediately on the right.

442 Jefferson Towne Drive
Raleigh, NC 27606

866.686.3454

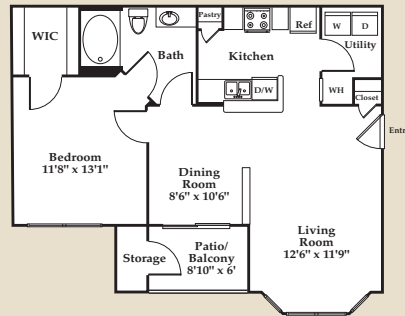
Fax: 919.233.9785

www.LegendsCaryTowne.com

Hours: Mon-Fri 9-6; Sat 10-5; Sun 12-5

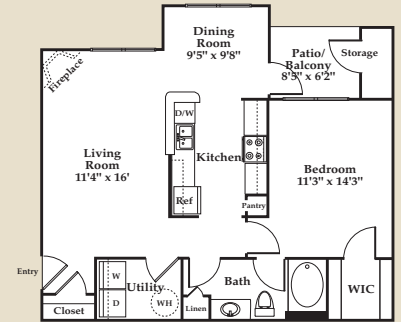


Floor Plans



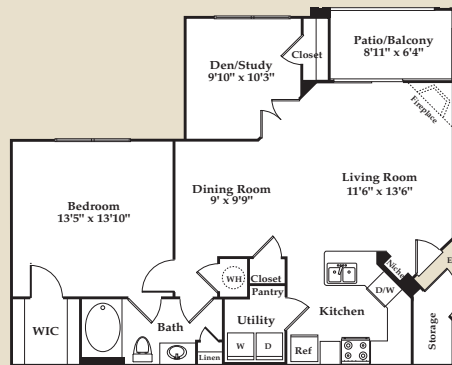
The Stuart

One Bedroom, One Bath
722 sq. ft.



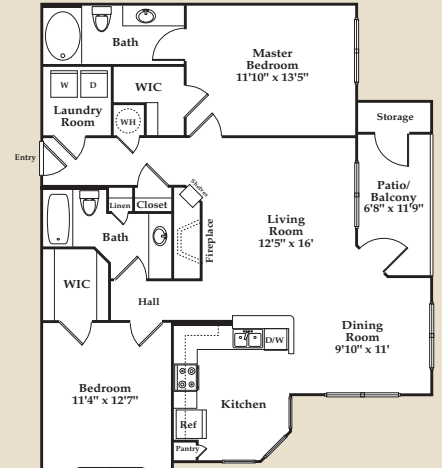
The Russell

One Bedroom, One Bath
805 sq. ft.



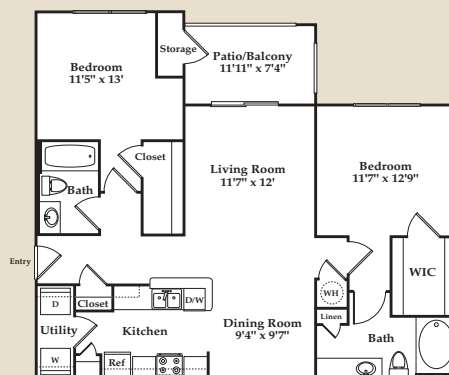
The Jackson

One Bedroom, One Bath
890 sq. ft.



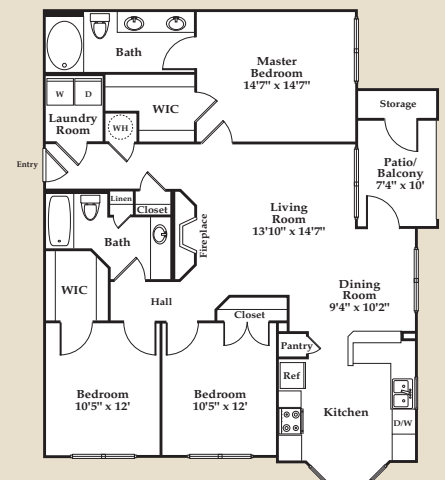
The Carnes

Two Bedroom, Two Bath
1,117 sq. ft.



The Fitzpatrick

Two Bedroom, Two Bath
1,021 sq. ft.



The Cabbell

Three Bedroom, Two Bath
1,289 sq. ft.